

**Space
Available**

Cherry Creek North

2727 East 2nd Avenue Denver, Colorado



www.buellco.com
303-320-6929

Property Information:

Space Available: Suite 250
Base Rent: \$20.00 PSF. \$13.50 NNN
Size: 2,147 SF. Available
Lease Term: 3 to 5 Year Lease Terms
Parking: Private Parking in Basement

Comments:

- Prime location in the heart of Cherry Creek North.
- Close proximity to Cherry Creek Mall and outstanding restaurants.

For more information or to arrange a showing, please contact:

John Maragon

303-320-6929, Ext. 225
1-877-321-6454, Ext. 225 Toll Free

jmaragon@buellco.com

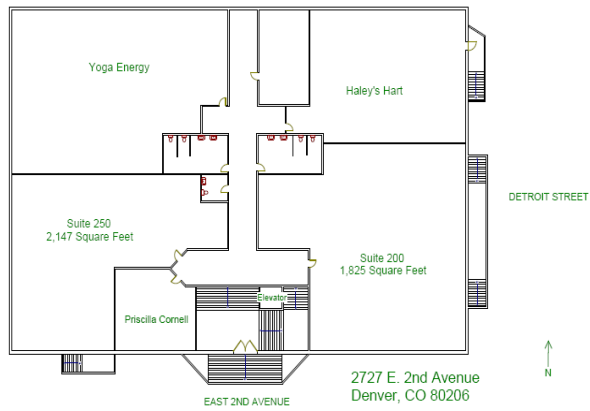
50 S. Steele Street, Suite 1000 Denver, Colorado 80209



**Buell
& Company**

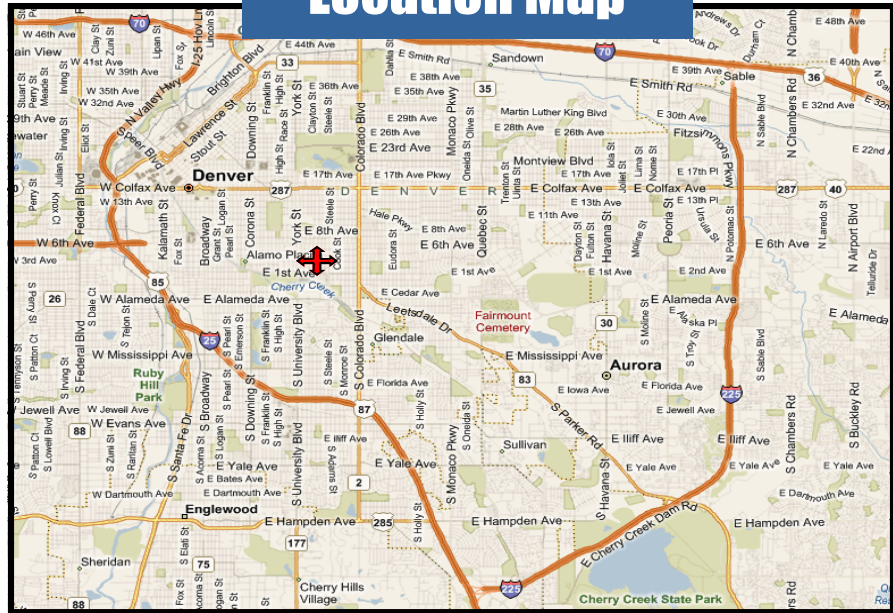
This statement with the information it contains is given with the understanding that all negotiations relating to the purchase, renting or leasing of the property described above shall be conducted through this office. The above information, while not guaranteed has been secured from sources we believe to be reliable. Price, terms and information subject to change.

Aerial Map



www.buellco.com
303-320-6929

Location Map



Buell
& Company

This statement with the information it contains is given with the understanding that all negotiations relating to the purchase, renting or leasing of the property described above shall be conducted through this office. The above information, while not guaranteed has been secured from sources we believe to be reliable. Price, terms and information subject to change.